



OSM 36-156M Series

150-170W Monocrystalline Module



High efficiency, all the innovative manufacturing technology, brings high conversion efficiency (up to 17.65%)



Outstanding performance in weak-light conditions



Certified to withstand increased loads of up to 5400Pa



Excellent temperature coefficient giving higher yields in the long term



Anti-PID

Management System and Product Certificate

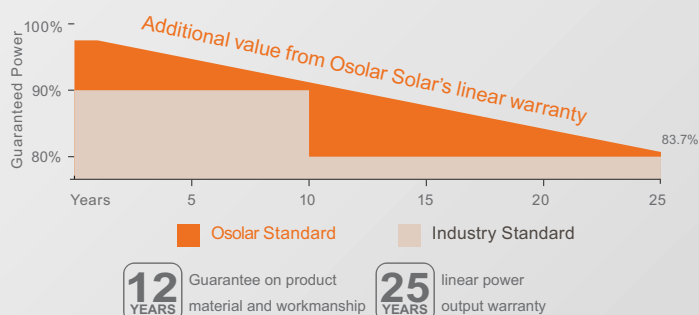
Conform to IEC 61215, IEC 61730, CEC Listed and CE

ISO 9001: 2015: ISO Quality Management System

ISO 14001: 2015: ISO Environmental management system



Linear Performance Warranty



DATA (STC)

ELECTRICAL DATA(STC)

Peak Power Watts-P _{MAX} (Wp)	150	155	160	165	170
Power Output Tolerance-P _{MAX} (W)	0 ~ +5W				
Maximum Power Voltage-V _{MPP} (V)	18.43	18.50	18.57	18.65	18.72
Maximum Power Current-I _{MPP} (A)	8.27	8.40	8.53	8.66	8.78
Open Circuit Voltage-V _{OC} (V)	22.42	22.50	22.58	22.66	22.74
Short Circuit Current-I _{SC} (A)	8.71	8.84	8.97	9.09	9.23
Module Efficiency η_m (%)	15.1	15.6	16.1	16.6	17.1

STC: Irradiance 1000 W/m², Cell Temperature 25 °C, Air Mass AM1.5.

MECHANICAL DATA

Solar cells	Monocrystalline 156 × 156 mm (6 × 6 inches)
Cell orientation	36 cells (4 × 9)
Module dimensions	1480 × 670 × 35 mm (58.2 × 26.3 × 1.37 inches)
Weight	11.5 kg (25 lb)
Glass	3.2 mm (0.13 inches), High Transmission, AR Coated Tempered Glass
Frame	Silver & black anodized aluminium alloy
Backsheet	Silver & black
J-Box	IP67 rated (3 diodes)
Cables	Photovoltaic Technology cable 4.0mm ² (0.006 inches ²), 900mm (35.46 inches)
Connector	MC4 or MC4 Compatible

TEMPERATURE RATINGS

Nominal Operating Cell Temperature (NOCT)	44 °C (±2 °C)
Temperature Coefficient of P _{MAX}	- 0.39%/°C
Temperature Coefficient of V _{OC}	- 0.29%/°C
Temperature Coefficient of I _{SC}	0.05%/°C

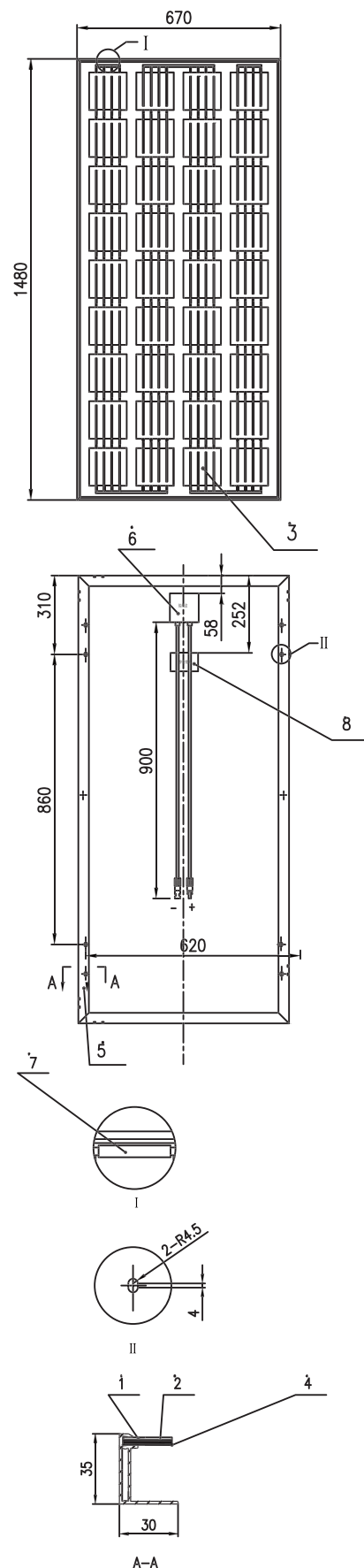
PACKAGING

Standard packaging	26pcs/pallet
Module quantity per 20' container	312 pcs
Module quantity per 40' container	728 pcs

MAXIMUM RATINGS

Operational Temperature	-40~+85 °C
Maximum System Voltage	1000V DC(IEC)
Max Series Fuse Rating	15A

Module Diagram



I-V & P-V Curves

SOLAR MODULE 36-170W

